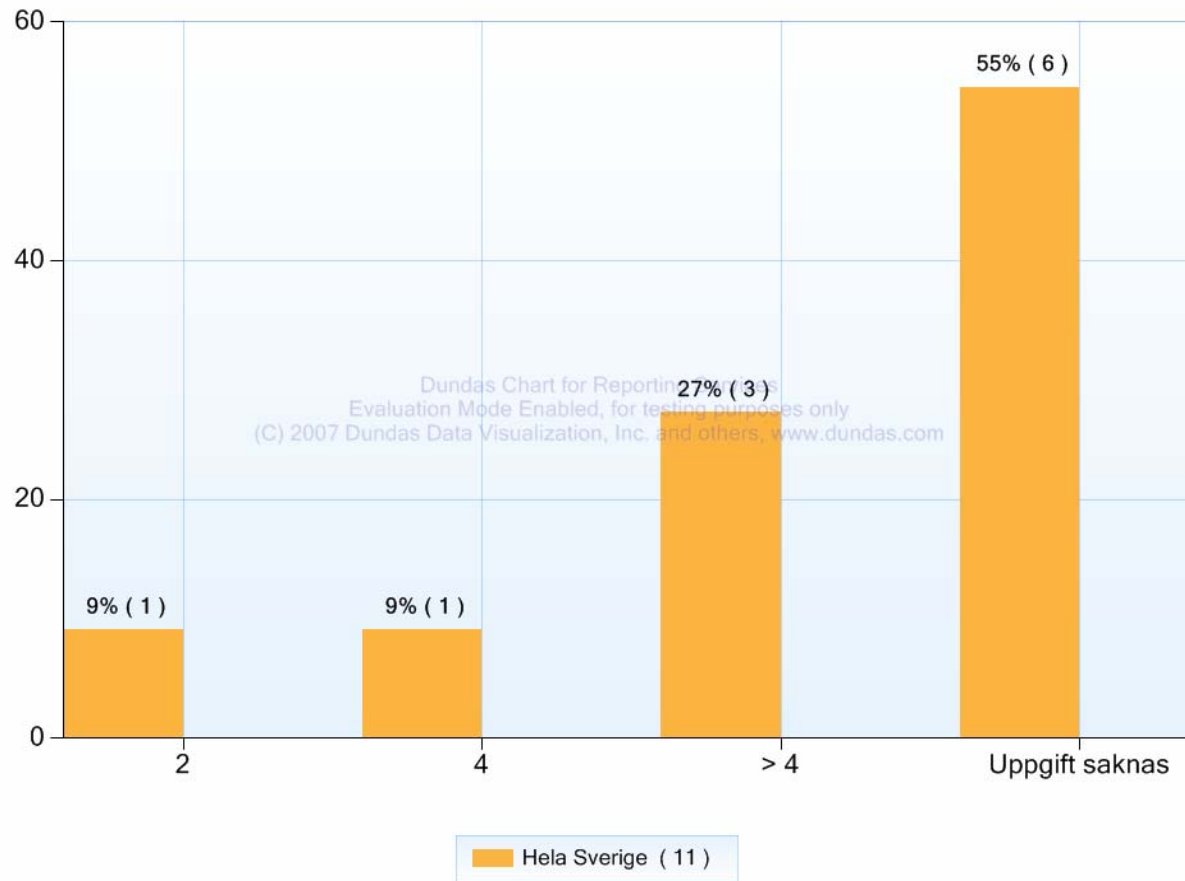
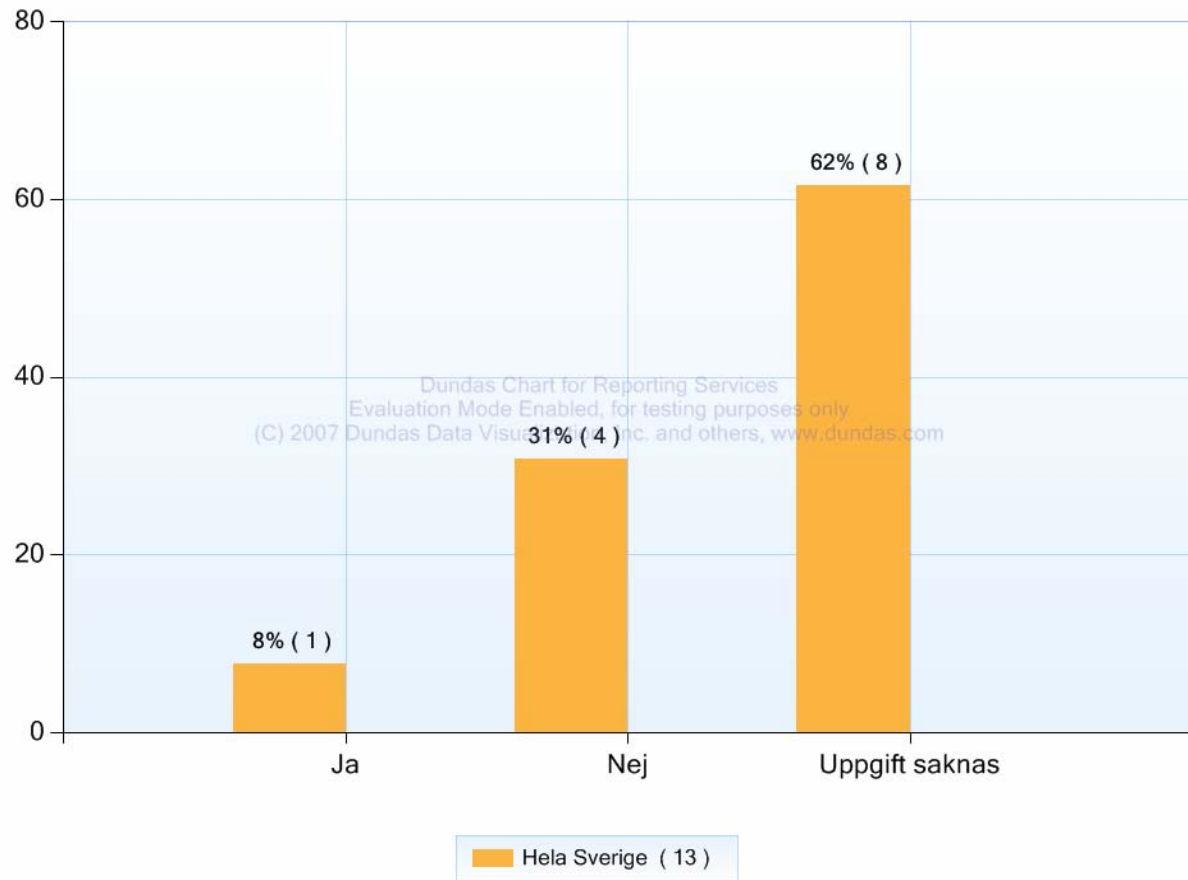


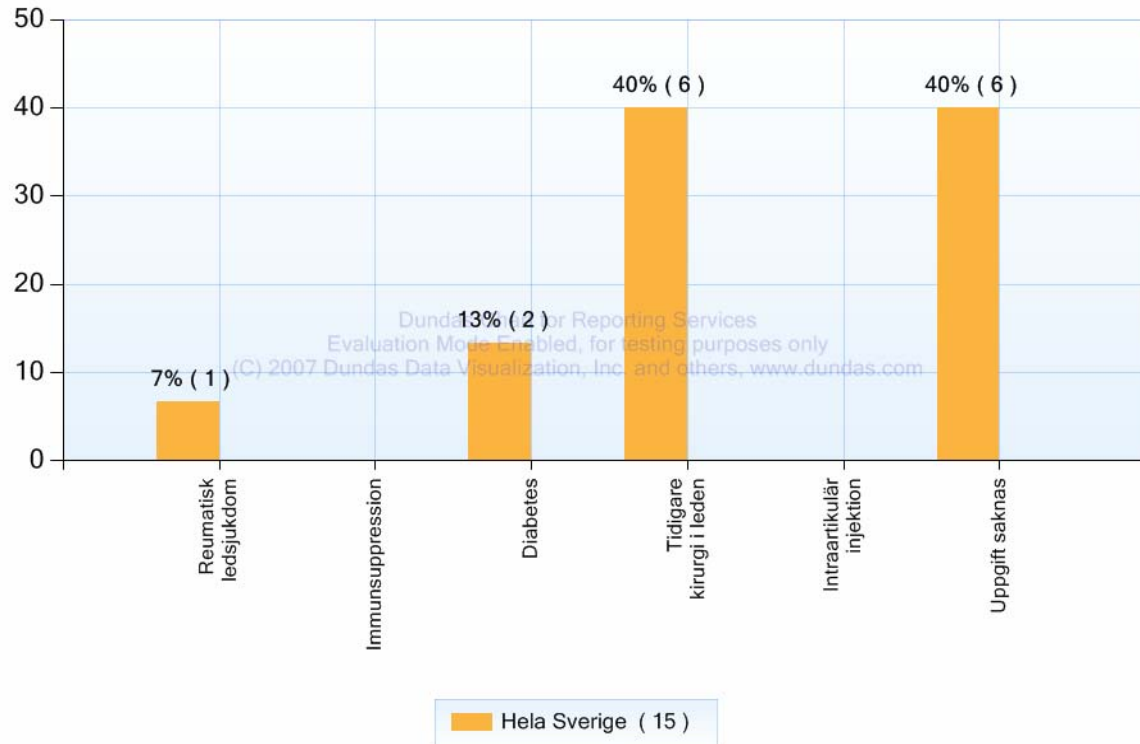
### Antal tagna vävnadsodlingar vid reoperation



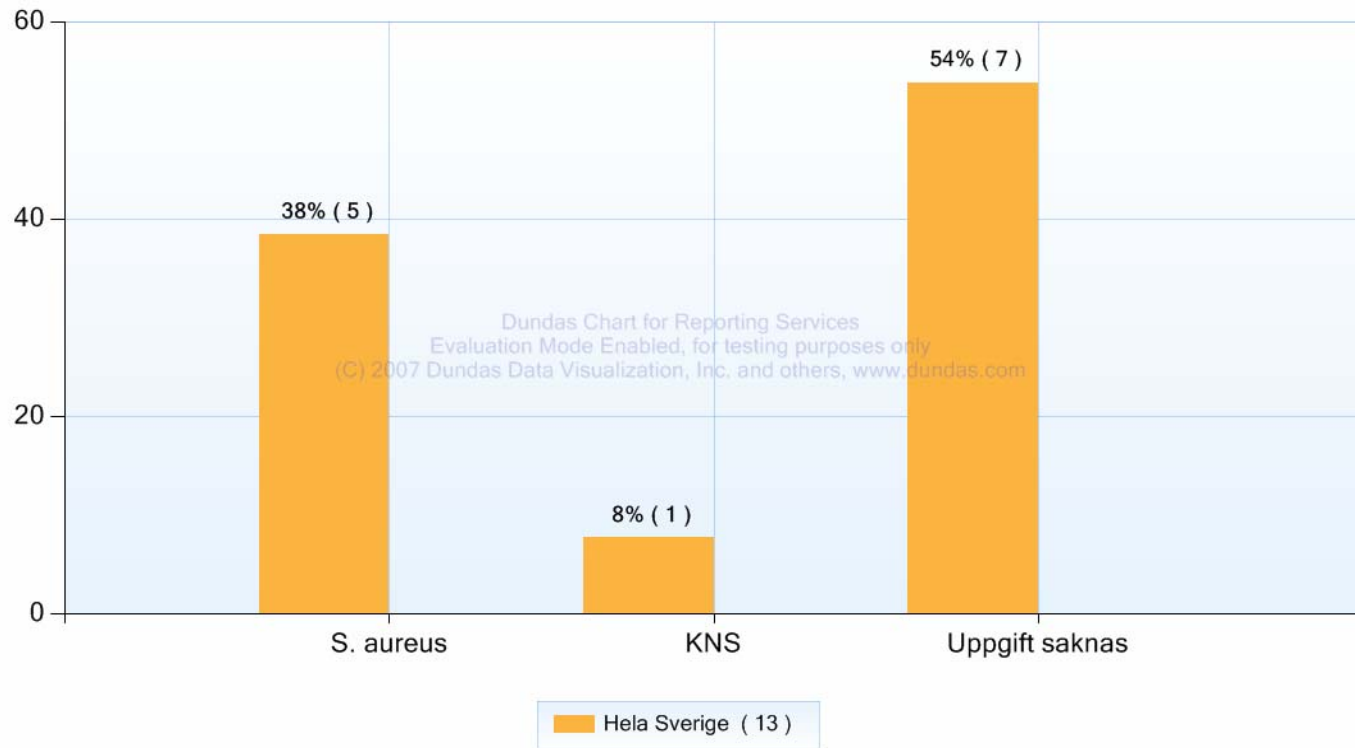
### Antibiotika utsatt 2 v innan vävnadsodlingar vid reoperation



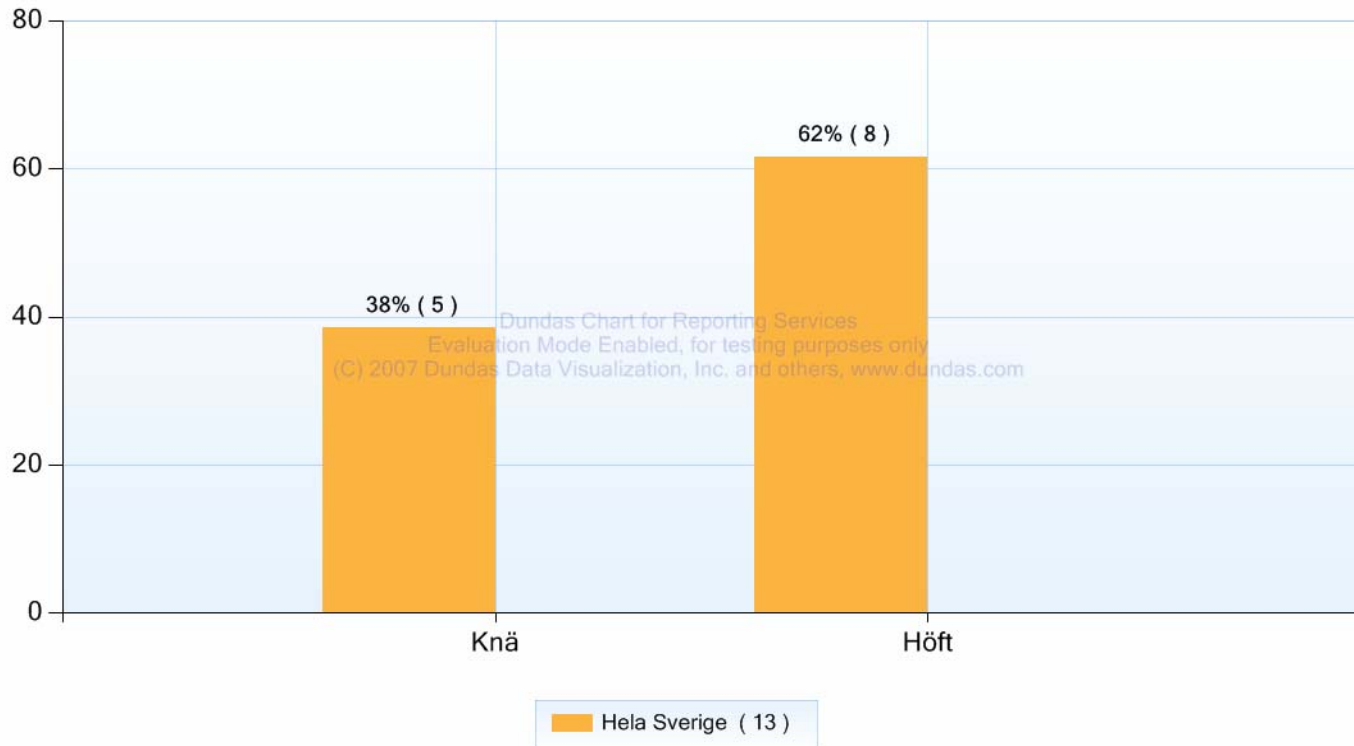
## Bidragande sjukdom



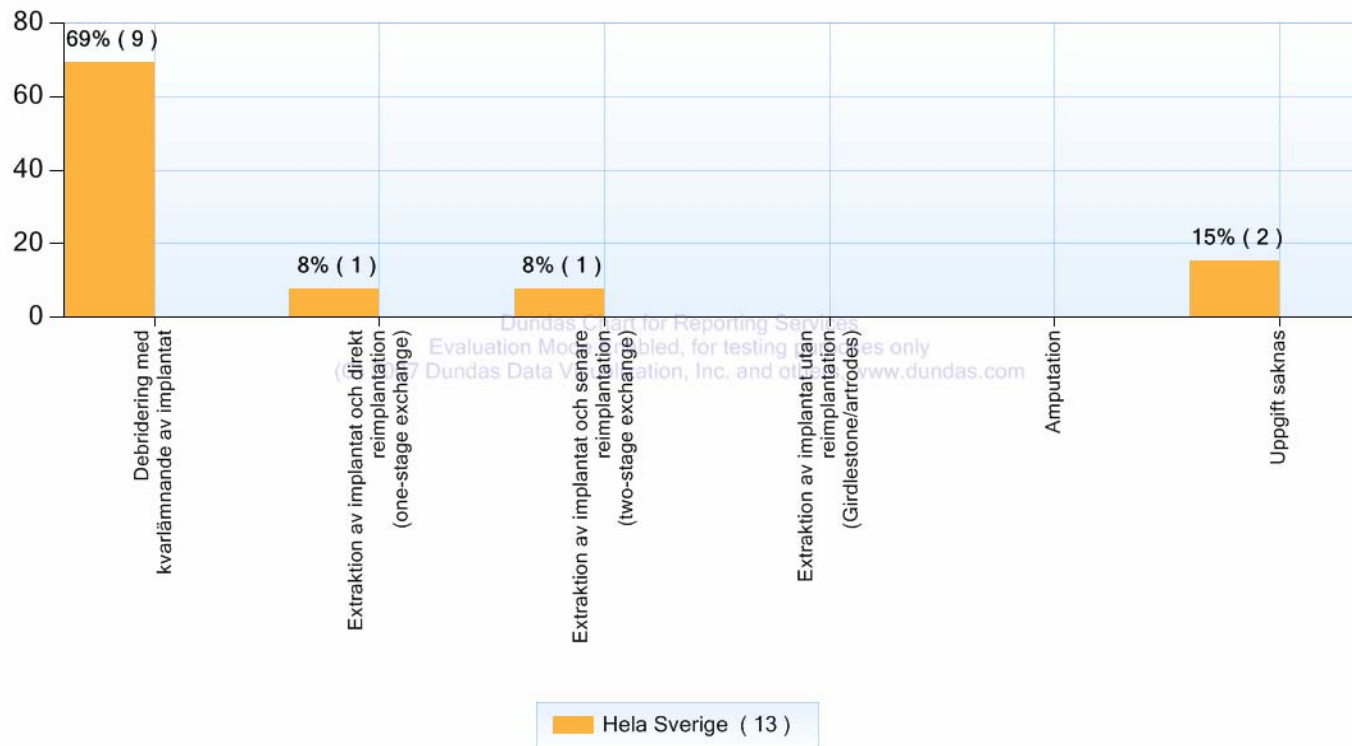
## Blododling



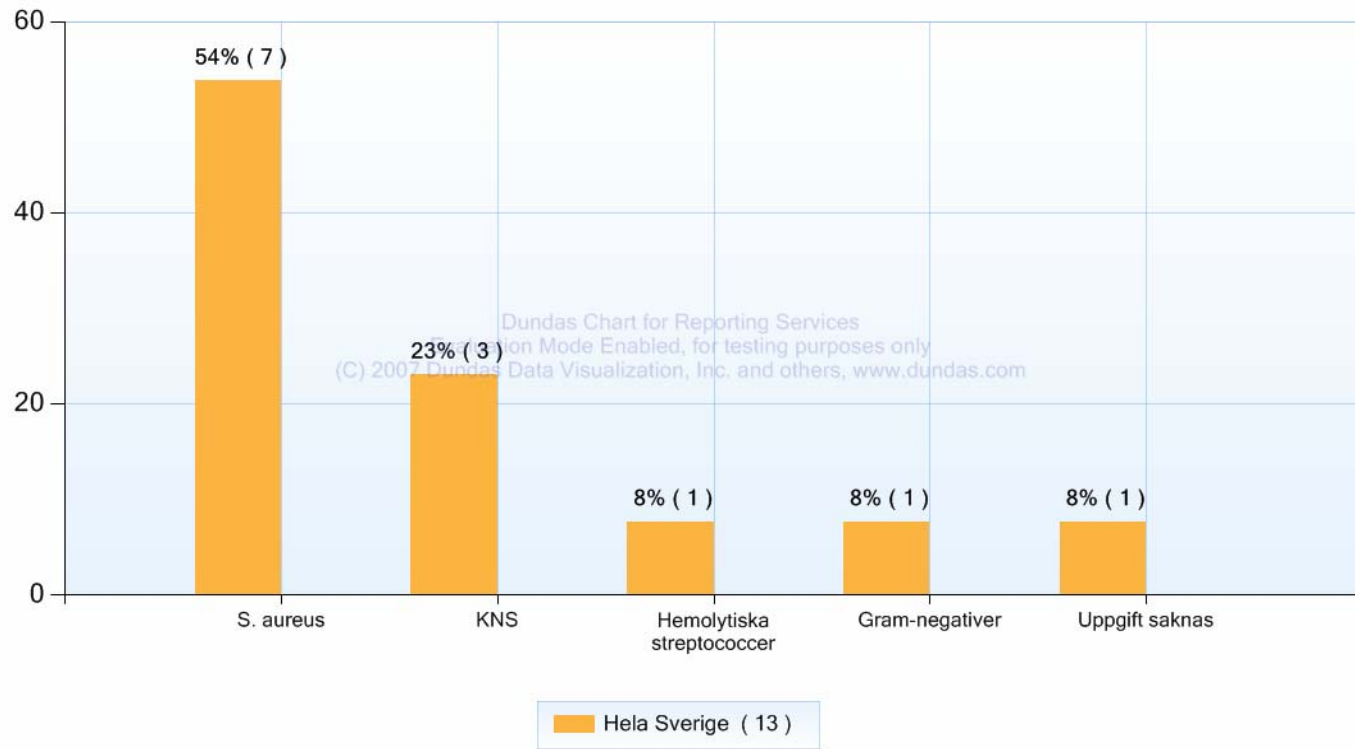
### Infekterad led



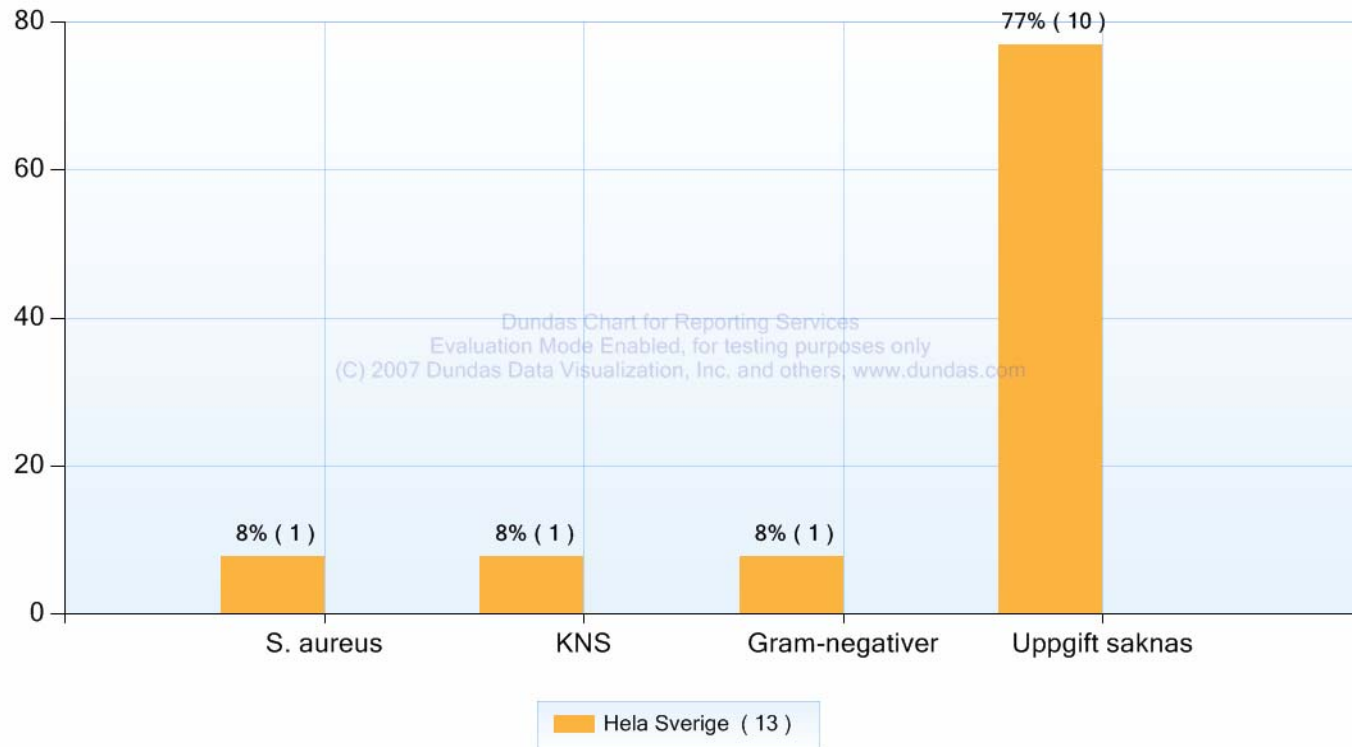
## Kirurgisk behandling



### Ledodling initialt

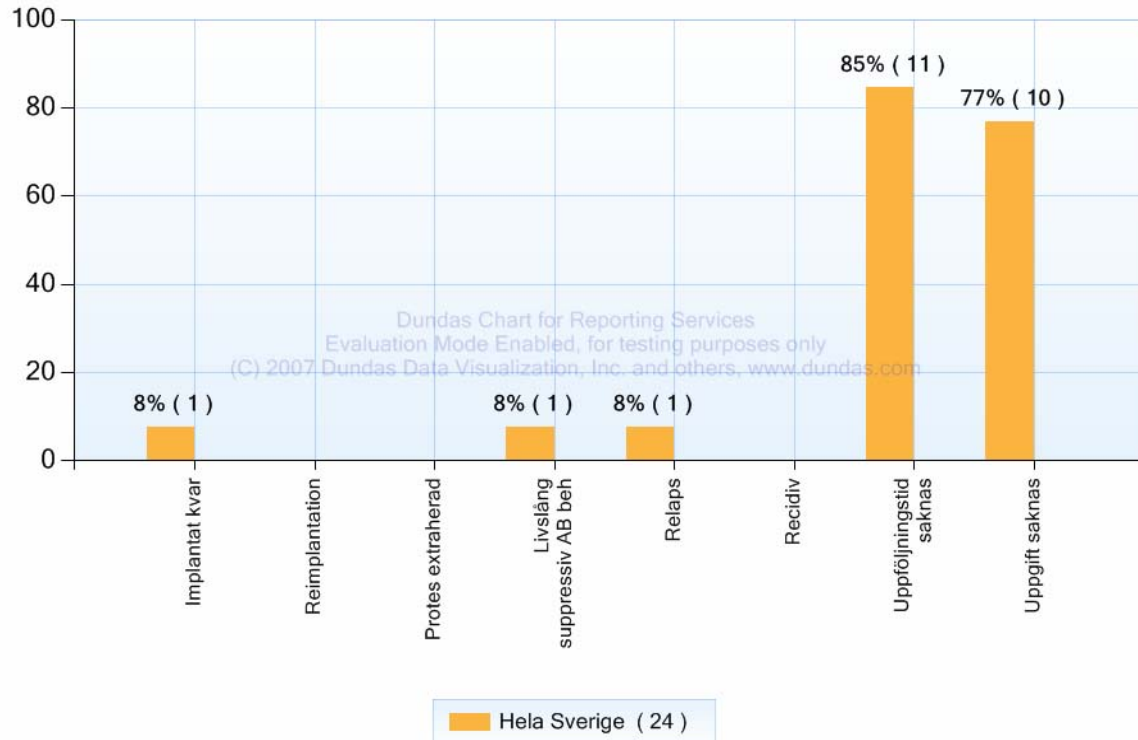


### Ledodling reoperation

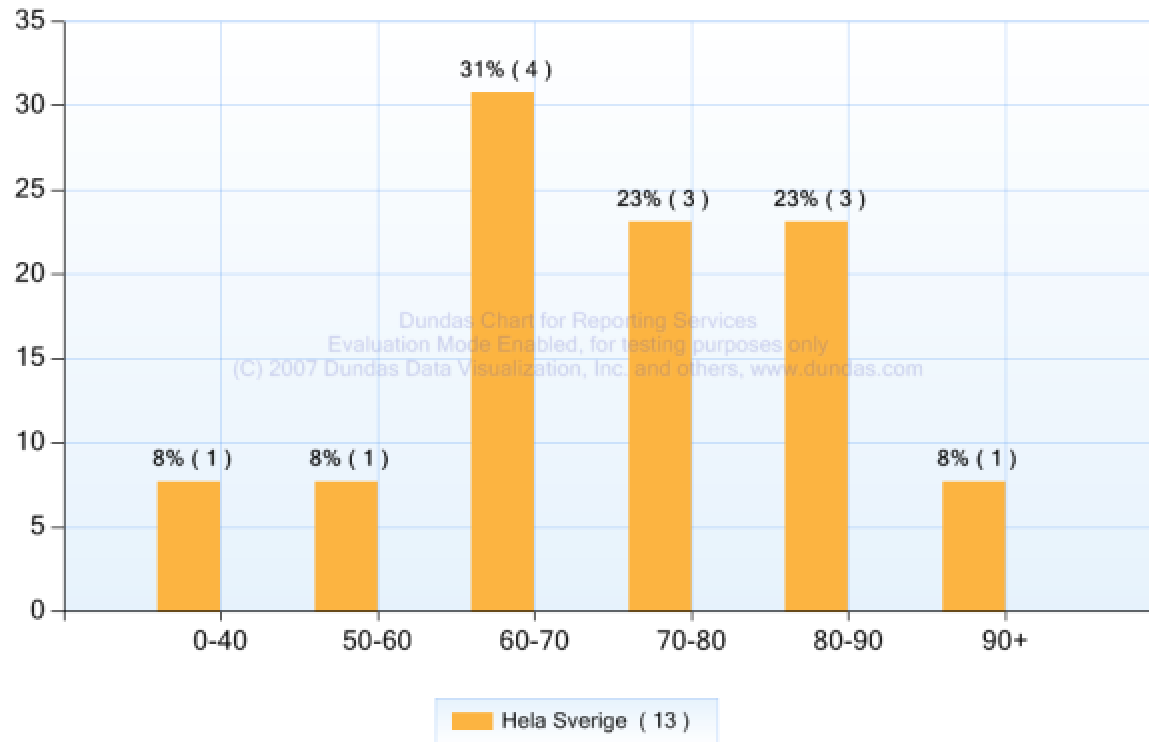




## Uppföljning



## Ålderssammansättning



### Statistik för hela Sverige

**Min:** 36

**Max:** 90

**Median:** 71

**Medelvärde:** 70